

# Welcome

to your  
Provincial Division  
of CUPE



# Why Should Our Local Union Affiliate?

**When CUPE Local Unions stand together, the strength of our membership allows us to be a powerful voice.**

Locals know we are all affected by the privatization of public services, the weakening of workplace rights and government decisions or mandates.

With affiliation to CUPE Saskatchewan, your CUPE Local Union can build strength and be part of solidarity that has a province-wide reach.

**There can be no more important reason to affiliate than to stand together for our members.**

CUPE Saskatchewan unites CUPE locals across the province and works at the provincial level for legislative, policy and political change. Together, we stand up for fairness, resist the privatization of public services, defend workers' rights and improve the political environment for collective bargaining. CUPE Saskatchewan hosts community engagement events, coordinates campaigns and activism across sectors within the union and across the province, and locals are provided additional resources and educational opportunities.

# How Does Affiliation Work?

## What Does CUPE Saskatchewan Offer Our Local?

### ▶ ANNUAL CONVENTION

Each year in March, CUPE Saskatchewan holds its Annual Convention. Delegates from affiliated locals gather to set the direction and determine priorities for the year ahead, hear reports on the vital work being done by our union's provincial division, elect members to leadership positions within CUPE Saskatchewan, approve budgets and engage in important discussions on the issues facing CUPE members and the public services we provide.

### ▶ ALL PRESIDENTS' MEETINGS

Several times a year, CUPE Saskatchewan hosts a meeting to bring together the Presidents and officers of CUPE locals across the province to provide updates on political and legislative changes, campaign activities and to hear from local leaders.

### ▶ CONFERENCES & EVENTS

CUPE Saskatchewan hosts several conferences and events throughout the year with a provincial focus to build activism, awareness and union empowerment.



**MARK YOUR CALENDAR!**  
*The next Annual Convention will be held on March 4 - 6, 2020 in Saskatoon.*

### ▶ SMALL LOCAL ASSISTANCE

CUPE Saskatchewan provides small local assistance to locals with fifty (50) full-time equivalent members or less to help with the costs of attending convention, conferences or other CUPE Saskatchewan hosted events.

### ▶ EVENT TRAILER BOOKINGS

CUPE Saskatchewan is actively involved in outreach and maintains an event trailer complete with large tents, barbeque and snow cone machine to host community events throughout the year.

### ▶ CAMPAIGNS & PUBLICATIONS

At CUPE Saskatchewan, we have campaigns and activities going on throughout the year and would appreciate the involvement of your local. We also have many resources, fact sheets and publications available for your local. Give us a call.

### ▶ PROVINCE-WIDE REACH

CUPE Saskatchewan maintains an active online presence through its website and social media accounts. Your Local Union can have its communications reach a larger audience and shared with the network of CUPE Local Unions and activists across the province.

CUPE Saskatchewan's office is a hub of activity devoted to locals. CUPE Local Unions voluntarily affiliate to the provincial division of CUPE — known as CUPE Saskatchewan. Each month, locals pay affiliation dues to CUPE Saskatchewan to fund its operations, activities, publications, research and public events held across the province.

# CUPE SASKATCHEWAN EXECUTIVE BOARD

2019 - 2020

Following elections at the March 2019 Annual Convention.

President  
**TOM GRAHAM**  
L. 859

Vice-President  
**DYLAN BRELAND**  
L. 456

Recording Secretary  
**MARCIA RAY**  
L. 8443

Secretary-Treasurer  
**JUDY HENLEY**  
L. 5430

Aboriginal Member  
**JOHN MCDONALD**  
L. 4195

Diversity Member  
**J.R. SIMPSON**  
L. 3730

Young Worker Member  
**JOEL HUBER**  
L. 456

Boards & Agencies Sector  
**KENT PETERSON**  
L. 4828

CBO Sector  
**KRISTINA ATHERTON**  
L. 3207

Education Sector  
**SHANNON MARTIN**  
L. 3730

Health Sector  
**PEARL BLOMMAERT**  
L. 5430

Health Sector  
**SANDRA SEITZ**  
L. 5430

Library Sector  
**DEBBI-LYNN BATESON**  
L. 1594

Local 600  
**JACALYN LUTERBACH**  
L. 600

Municipal Sector  
**RICK SIELSKI**  
L. 47

University Sector  
**JAMIE MELLOR**  
L. 5791

# CUPE SASKATCHEWAN STRUCTURE

**CUPE Saskatchewan unites CUPE Local Unions** to speak with one strong collective voice and works at the provincial level for legislative, policy and political change on issues affecting CUPE members and the public services they provide each and every day.

## Organizational Structure of CUPE Saskatchewan

**Annual Convention:** CUPE Local Unions voluntarily affiliate to CUPE Saskatchewan Division and send delegates to the Annual Convention where elections are held for leadership positions, reports are received, and resolutions are passed determining the direction and priorities for the year ahead.

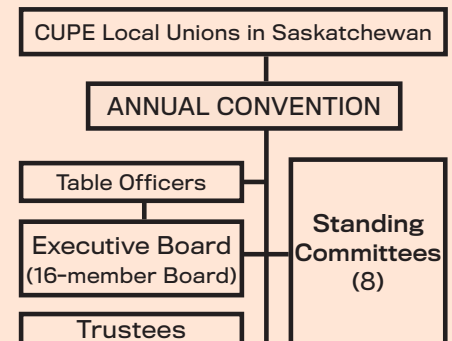
**Table Officers:** President, Vice-President, Recording Secretary and Secretary-Treasurer. Positions are two-year terms elected at the Annual Convention on a rotating basis in even and odd years.

**Executive Board:** Table Officers, Aboriginal Member, Diversity Member, Young Worker Member and Sectoral Members including: Boards and Agencies Member, Community Based Organizations Member, Education Member, Health Care Members (two positions), Library Member, Local 600 Member, Municipal Member and University Member. Positions are two-year terms elected at the Annual Convention on a rotating basis in even and odd years. The Executive Board governs CUPE Saskatchewan between Conventions and carries out the decisions made at Convention.

**Trustees:** Three trustees ensure financial controls are in place and financial statements are accurate. Positions are three-year terms, with one position elected each Annual Convention.

**Standing Committees:** Each of CUPE Saskatchewan's eight standing committees has three members. In even years, two members are elected at the Annual Convention. In odd years, one member is appointed by the Executive Board. (For Aboriginal Council Committee composition, see Article 5, Section 9, The Constitution). Elected members and appointed members serve a two-year term. Standing Committees advise the Executive Board. Each committee's objectives are identified in Appendix C of The Constitution.

**Staff:** CUPE Saskatchewan employs two staff members to support its officers and Executive Board, and to carry out its office administration, operations and activities.



## CUPE SASKATCHEWAN TRUSTEES 2019 - 2020

Following elections at the March 2019 Annual Convention.

Trustee  
**BOB KARDAL**  
L. 8443  
(2017 - 2020)

Trustee  
**PATRICIA GAUSMAN**  
L. 4875  
(2018 - 2021)

Trustee  
**SHARM DURSUN**  
L. 5430  
(2019 - 2022)

## CUPE SASKATCHEWAN STAFF

JODI REAVLEY

j.reavley.cupe@sasktel.net

NATHAN MARKWART  
Executive Assistant

n.markwart.cupe@sasktel.net

Tel. 306-757-1009

Division Office  
3725 E. Eastgate Drive  
Regina SK S4Z 1A5

Build your  
Local Union  
**STRENGTH &  
SOLIDARITY**  
**Affiliate!**

