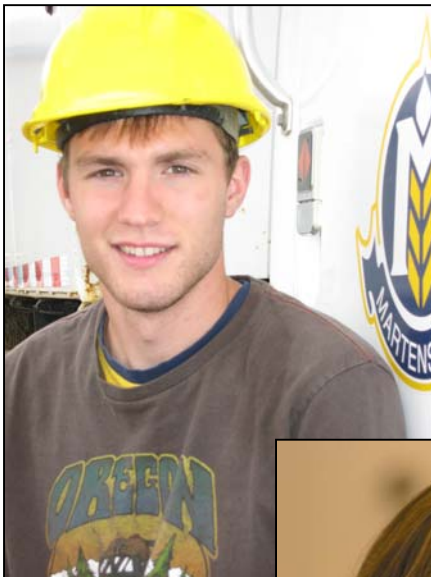


SASKATCHEWAN'S *30th ANNIVERSARY* SUMMER SCHOOL (2008)

Sponsored by the Union Development Department



CUPE *education*
where the *action* is!

May 25 – 30, 2008

Waskesiu Lake, SK

MESSAGE TO PARTICIPANTS AT WASKESIU WEEKLONG SCHOOL

March 2008

Sisters and Brothers:

I am pleased to bring greetings to each of you attending the annual weeklong school in Saskatchewan.

The recruitment and development of union activists is the lifeblood of our union, and to this end, I want to thank each of you personally and your home locals for your participation in this year's weeklong school. Our unity is our ultimate strength and I know that this will see us through the current challenges we face.



The skills you will develop at the weeklong school will better equip you to provide the leadership that our members want and deserve – leadership in the workplace, at the bargaining table, and in our dealings with governments, at all levels.

The other very positive feature of the weeklong school is the friendships you will make and the experience you will share with your sisters and brothers. This as much as anything leads to the solidarity that is so essential to building our union and defending the interests of our members.

Have a great week.

In solidarity,

PAUL MOIST
National President

cope 491

Welcome to the 30th Anniversary CUPE Saskatchewan Summer School

Who Can Attend?

The School is open to all CUPE Members.

Class size will be limited to approximately 20 participants. Participants will be registered on a first come basis. It is very important to signify a **second** choice. Your registration fees **MUST** accompany your registration form.

In order to provide the best learning environment, the Registrar reserves the right to cancel any course if the registrations are low, or transfer participants to their second choice. Participants will not receive confirmation or notification, unless "1st Choice" of workshop is full or cancelled. The Registrar also reserves the right to limit the number of members any one Local may send to any workshop and to assign participants to a second choice workshop.

Scholarship Program

The following three (3) Scholarships are available for CUPE members to attend the upcoming Summer School, May 25 to 30, 2008:

Glen Makahonuk Scholarship:

- Offered by CUPE Saskatchewan. The Local, from which a member who is applying for the scholarship, must be affiliated and in good standing with CUPE Saskatchewan.
- Applicants must provide the Committee with an essay on one of the following topics:
 - a) *Labour History of Saskatchewan*
 - b) *Why Aboriginal members should be active in the Labour Movement*
 - c) *Why Youth (age 30 and under) should be active in their Union*
 - d) *Why Women should be active in their Union*

e) *Why gay, lesbian, bisexual or transgender members should be active in their Union.*

- Covers the cost of registration, travel allowance and all lost wages.

Bruno Friebe Scholarship:

- Offered by Local 600-3.
- Available to CUPE Locals with LESS than 50 members.
- A copy of your Local's last per capita payment sent to National Office must accompany the application for the scholarship.
- Provides \$1,000 to the local for registration, balance to be used to offset other additional costs such as wages and mileage.

Union Development Scholarship:

- Offered by the Union Development Dept., Saskatchewan Area.
- Available to all CUPE members in the province.
- Covers the registration cost.

Small Local Bursary

- Offered by the 2007 Summer School participants. Value = \$265.00
- Available to CUPE Locals with LESS than 50 members.
- A copy of your Local's last per capita payment sent to National Office must accompany the application for the bursary.
- Must provide an essay on: "*What it would mean for the local and the member of the local attending should they receive the bursary*".

Send applications by mail, fax or e-mail to:

Bill Robb
CUPE Temporary Education Representative
250 Cardinal Crescent
Saskatoon, SK S7L 6H8
E-mail: brobb@cupe.ca

Deadline is April 21, 2008

(Poster & Application at back)

CUPE 2008 Summer School COURSE DESCRIPTIONS

CHOOSE ONE (1) COURSE FROM THE FOLLOWING SELECTIONS

*** Remember to signify a Second choice

COURSE #1

INTRODUCTION TO PENSIONS

Cathy Remus & Marg Romanow

Our pensions are our retirement wages – they're just as important as the wages we receive while working. Do you wonder how government and workplace pension plans will work for you? Are you curious about the pressures that our plans are facing? Do you want to know more about the kinds of benefits that are possible in a pension plan? Or maybe the laws that regulate workers' pensions? Would you like to strategize with other CUPE members about how to improve and protect our retirement wages? Do you want to explore ways to use pension fund investment to help create social justice? If so, this workshop is for you!

If you have a pension plan at work, please bring a copy of your pension statement, along with any other materials you receive from the plan. You could also bring a copy of your Canada Pension Plan statement, if you have received one.

COURSE #2

P3's AND CONTRACTING OUT

Mike Keith & Aina Kagis

Want to learn to de-code the privatization agenda? Public private partnerships? Privatization! Enterprise Saskatchewan? Privatization! What's the most effective way to keep public services in the public domain? A behind the scenes lobby campaign? A cost benefit analysis? A communications campaign? Who do you want to influence? Your members? The public? Various levels of government? In this course, participants will learn to diagnose the early symptoms of privatization initiatives as well as to select among appropriate treatment options.

COURSE #3

BUILDING STRONG LOCALS IN THESE TIMES

Jane Stinson & Four Guest Facilitators

Together we will open our hearts and minds to explore the endless possibilities of building strong CUPE locals that reflect the times we are in as we prepare for the future. We will discuss how we can actively involve all our members in a way that reflects our diversity and addresses equality issues. This workshop is for all CUPE locals that wish to change with the times and grow stronger and more inclusive.

COURSE #4

COLLECTIVE BARGAINING

Suzanne Posyniak & Sharleen Rayner

The focus of this workshop is a role-play that helps build high-level bargaining skills. If you are a bargaining committee member, here's your chance to work with real bargaining information and gain the experience you need when facing management. You'll also explore current issues like interest-based bargaining and bargaining for equality.

Please bring your collective agreement.



CUPE 2008 Summer School INFORMATION

Accommodation: The School is in the resort of Waskesiu Lake located in Prince Albert National Park, north of Prince Albert.

Choice of accommodation: We have access to Armstrong Hillcrest cabins and hotel rooms at the Hawood Inn. Each cabin has two separate bedrooms, living and kitchen area with a private bathroom. One three bedroom cabin is available. Please indicate your choice on the registration form.

Accommodation will be assigned on a first come basis. If we are advised in advance, we will attempt to room non-smokers together, and also try to match you up with someone who shares the same personal schedule (i.e. those that like to socialize and those who prefer to retire early).

Refund Policy:

- ◆ up to May 2: full refund
- ◆ after May 2: no refund

Meals: Please note on the registration form any special dietary needs you have. Meals are provided by the Hawood Inn.

The registration fee includes all meals:
Sunday: Supper (served between the hours of 7:00-8:30 p.m.)

Monday-Thursday: Breakfast, Lunch and Supper

Friday: Breakfast and Bag Lunch
No other meals are included in the price.

General Information: All participants are expected to attend the Opening and Closing Plenary Sessions. We suggest that participants time their arrival on Sunday, May 25 between 3:00 p.m. and 5:00 p.m.

Smoking is not allowed in classrooms.

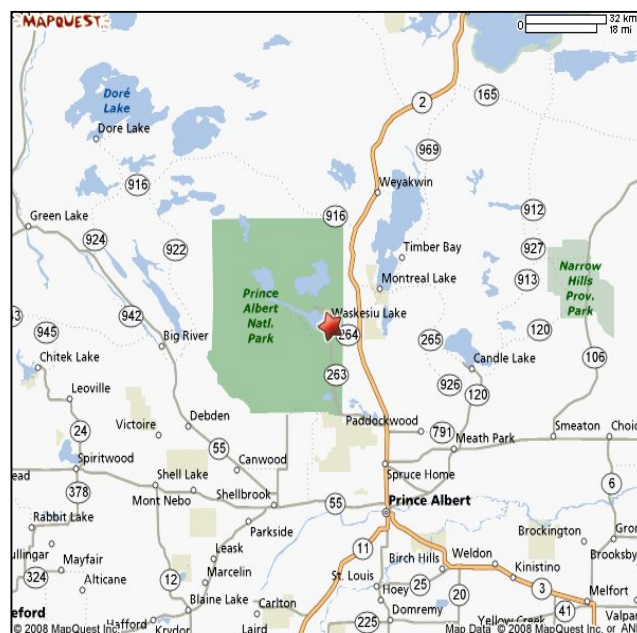
Participants must pay for their own phone calls (including long distance and local).

Park Fee: There is a fee to enter the National Park of approximately \$50.00.

Please Bring:

- ◆ a copy of your collective agreement;
- ◆ personal toiletry articles;
- ◆ alarm clock;
- ◆ rain coat and a heavy sweater or jacket;
- ◆ personal sports gear (i.e. golf clubs, tennis racquet, etc.)
- ◆ hiking shoes
- ◆ If you play a musical instrument – please bring it!

All participants are advised that a high standard of trade union behaviour is expected of them. All forms of harassment are unacceptable. The registrar will deal with incidents in a fair and quick fashion, and reserves the right to send participants home without refund for inappropriate behaviour.



CUPE 2008 Summer School SCHOOL AGENDA

Sunday, May 25

Check In	3:00 – 5:00 p.m.
Opening Session (in the Kingsmere Hall at the Hawood Inn)	5:30 – 6:30 p.m.
Supper	7:00 – 8:30 p.m.
Welcoming Reception (Kingsmere Hall)	8:30 – 10:30 p.m.

Monday-Thursday (May 26-29)

Breakfast	7:00 – 8:45 a.m.
Course Workshops	9:00 – 12:00 noon
Lunch	12:00 – 12:45 p.m.
Course Workshops	12:45 – 4:30 p.m.
Supper	6:00 – 10:00 p.m.

Friday, May 30

Breakfast	7:00 – 8:45 a.m.
Course Workshops	9:00 – 11:00 a.m.
Closing Session (Kingsmere Hall)	11:00 – 11:30 a.m.
Box Lunch	11:30 a.m.

SOCIAL ACTIVITIES:

WELCOMING RECEPTION – Sunday, May 25 (Hawood Inn)

STEAK NIGHT – Wednesday, May 28 (Hawood Inn)

BANQUET – Thursday, May 29 (Hawood Inn)



CUPE 2008 Summer School REGISTRATION FORM

Local _____

Name _____

Sister Brother

Address _____

City/Town _____

Postal Code _____

Home Phone _____

E-mail _____

Course Selection

We will do our best to ensure you are enrolled in the course of your choice. However, each course enrolment is limited and registration will be on a first come basis. Please give us your second choice!

Choices: 1st 2nd

- | | | |
|---|--------------------------|--------------------------|
| Course #1 – Introduction to Pensions | <input type="checkbox"/> | <input type="checkbox"/> |
| Course #2 – P3's and Contracting Out | <input type="checkbox"/> | <input type="checkbox"/> |
| Course #3 – Building Strong Locals in These Times | <input type="checkbox"/> | <input type="checkbox"/> |
| Course #4 – Collective Bargaining | <input type="checkbox"/> | <input type="checkbox"/> |

Special Needs

Do you have any special dietary, access, mobility or other health needs?
 Yes No If yes, please specify:

Accommodation

In order to make comfortable arrangements for each person, please complete:

- Do you smoke? Yes No
 Do you like to socialize? Yes No
 Do you go to sleep early? Yes No
 Do you prefer a quiet setting? Yes No
 Do you require single accommodation? Yes No

Summer School Fees

The registration fee includes meals and accommodation. Costs are per person and listed below.

Please choose/check ONE:

Hawood Inn (hotel room):

Based on double occupancy – cost is **\$750.00 per person.**

Based on single occupancy – cost is **\$1,125.00 per person.**

Armstrong Hillcrest Cabins:

Two bedroom (2 people) – cost is **\$850.00 per person.**

Three bedroom (3 people) – cost is **\$850.00 per person.**

All fees **MUST** accompany your registration form. **Make cheque payable to:** "Canadian Union of Public Employees"

Mail a copy of the completed form and cheque to:

Bill Robb
 CUPE Temp. Education Representative
 250 Cardinal Crescent
 Saskatoon, SK S7L 6H8
 Phone: (306) 382-8262
 Fax: (306) 382-8188
 E-mail: brobb@cupe.ca

DEADLINE: May 2, 2008

SCHOLARSHIPS / BURSARY

The following bursary and scholarships are available for CUPE members planning on attending the upcoming Saskatchewan Summer School to be held in Waskesiu Lake on May 25-30, 2008:

Small Local Bursary:

- Offered by the 2007 Summer School participants. Value = \$265.00
- Available to CUPE Locals with LESS than 50 members.
- A copy of your Local's last per capita payment sent to National Office must accompany the application for the bursary.
- Must provide an essay on: "*What it would mean for the local and the member of the local attending should they receive the bursary*".

Glen Makahonuk Scholarship:

- Offered by CUPE Saskatchewan. The Local, from which a member who is applying for the scholarship, must be affiliated and in good standing with CUPE Saskatchewan.
- Applicants must provide the Committee with an essay on one of the following topics:
 - a) *Labour History of Saskatchewan*
 - b) *Why Aboriginal members should be active in the Labour Movement*
 - c) *Why Youth (age 30 and under) should be active in their Union*
 - d) *Why Women should be active in their Union*
 - e) *Why gay, lesbian, bisexual or transgender members should be active in their Union.*
- Covers the cost of registration, travel allowance and all lost wages.

Bruno Friebe Scholarship:

- Offered by Local 600-3.
- Available to CUPE Locals with LESS than 50 members.
- A copy of your Local's last per capita payment sent to National Office must accompany the application for the scholarship.
- Provides \$1,000 to the local for registration, balance to be used to offset other additional costs such as wages and mileage.

Union Development Scholarship:

- Offered by the Union Development Dept., Saskatchewan Area.
- Available to all CUPE members in the province.
- Covers the registration cost.

Send applications by mail, fax or e-mail to:

Bill Robb

CUPE Temporary Education Representative

250 Cardinal Crescent

Saskatoon, SK S7L 6H8

Fax: (306) 382-8188

E-mail: brobb@cupe.ca

Deadline is April 21, 2008

PLEASE POST

SASKATCHEWAN 2008 SUMMER SCHOOL



APPLICATION FOR SCHOLARSHIPS/BURSARY

Local #: _____

Name: _____

Address: _____

Home Phone: _____ Work Phone: _____

E-mail: _____

Check One:

Attachments Required:

Small Local Bursary

Per Capita Form
Essay

Scholarships:

Glen Makahonuk

Essay

Bruno Friebe

Per Capita Form

Union Development

Comments:

DEADLINES:

**SCHOLARSHIPS/
BURSARY:**

April 21, 2008

REGISTRATION:

May 2, 2008

REFUND POLICY:

- ◆ up to May 2: full refund
- ◆ after May 2: no refund

This brochure is also available on the
CUPE Saskatchewan Division's website: <http://cupe.sk.ca/>